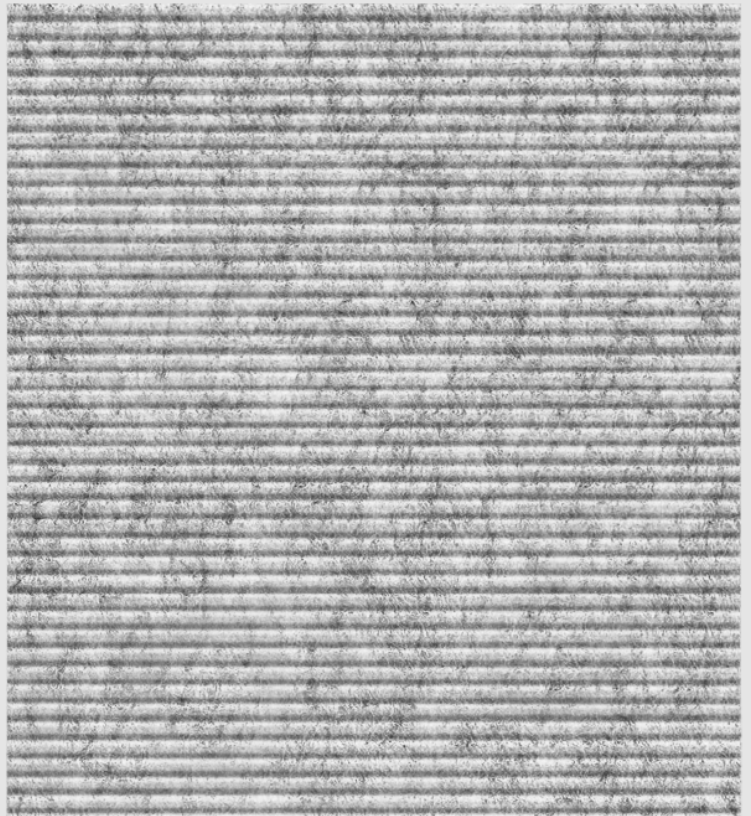
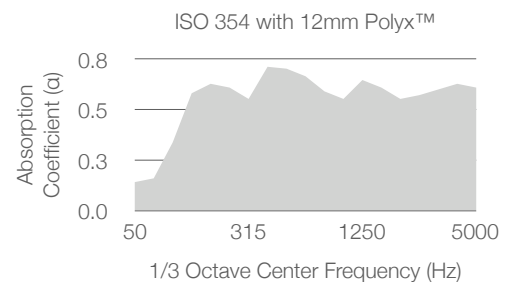


# Polyx™ Horizon 30L



Trademark and 2024 ©

Polyx™ Horizon panels feature a series of horizontal grooves that run across the surface, creating a sleek and continuous linear effect. The horizontal orientation of the grooves emphasises the width of the space, adding a sense of expansiveness. Polyx™ Polyester Board is made by a process of tumbling, needle punching, and baking low and high melting point polyester fibres. The high density fibrous network absorbs sounds and reduces reverberation.



## Technical Specifications

|                    |   |
|--------------------|---|
| Material           | Polyester Board                                       |
| Standard Dimension | 1200mmW x 2400mmH                                     |
| Standard Thickness | 9mm, 12mm, 18mm, 24mm                                 |
| Bevel Dimensions   | 20mmW x 10mmH   |
| Bevel Angle        | 45 Degrees  |
| Chamfered Edge     | Top & Bottom  |
| Eco-Friendly Test  | EN 13986 = E1   |
| Fire-Rated Test    | EN 13501-1 = Class B s1, d0                           |
| Acoustic Test      | ISO 354 = NRC 0.65 with 12mm Polyx™ and 100mm Air Gap |